

NEWS & MORE

Candidate City Newsletter

No. 01, 15 June 2010



BRANDENBURG AN DER HAVEL
World Rowing Championships . Candidate City

Dear rowing friends

As you no doubt already know, the German Rowing Association (Deutscher Ruderverband, DRV) is applying to host the 2015 World Rowing Championships at the regatta course in Brandenburg an der Havel.

After successfully hosting two Junior World Championships in 1985 and 2005, as well as the excellently organised U23 World Championships in 2008, we are now hoping that the Beetzsee Lake in Brandenburg will finally host a "major" world championship.

To realise this ambitious undertaking, a committed team of



volunteers has been formed who will work under my leadership. We will be issuing newsletters at regular intervals that will report on the current state of the candidacy and the further expansion of the regatta course, and which will provide you with the latest news and background information.

This will enable our many friends throughout the world to keep in touch with the rapid developments going on here in Brandenburg. And we also want to reach out to all those who are still not fully acquainted with the most beautiful natural regatta course in the

world. We would be extremely delighted if you would not only attentively read our newsletter yourself but also pass on this information to as many other interested people as possible.

Of course you can also give us corresponding email addresses to which we can then send the newsletters directly. We would also be thankful for any feedback with tips and suggestions for possible improvements. You can find our contact details at the end. I hope you enjoy the read.

With greetings to all rowing fans from Brandenburg an der Havel, yours, Hartmut Duif

Modern logo for the World Championships candidacy

They are already beginning to appear here and there: the smart stickers with the new logo for the "Candidate City" Brandenburg an der Havel. The logo (see header right) was specially designed by the Brandenburg design agency freivonform for Brandenburg's bid for the 2015 World Rowing Championships.

The thoughts that went through the creative minds in designing the logo are explained by agency member Janin Deisler: "It was important to the organisation team that the prominent finish tower for

the regatta course is reflected in the logo. We have tried to make this hard structure somewhat softer and more flowing in order to place greater emphasis on the water as an element. The integrated oar shapes provide the perfect connection to rowing and demonstrate what it is about: a world rowing championships in a modern and international city. Combined with the city's graphic identity, the logo will soon be making a lasting impression and professionally support the candidature phase."

The logo will be displayed from now on in all information material. It will also feature on the presentation stand with which representatives from the bidding team will journey this year and next to the major national and international regattas in order to seek support from athletes, trainers and association dignitaries in its bid to host the 2015 World Rowing Championships in Brandenburg an der Havel.

Island in Beetzsee Lake has been "shifted" 27 metres

Nobody wanted to believe for a long time that it was seriously intended to shift an island in Brandenburg an der Havel in order to create more space for the rowers and canoeists. Even when the official groundbreaking ceremony was conducted together with FISA President Dennis Oswald during the U23 World Championships in summer 2008, there were certainly still one or more sceptics who doubted the feasibility of this ambitious project to expand the traditional natural regatta course to eight lanes.

In the mean time the small Hünensteg Island – popularly known as "Acapulco" by the locals – has now wandered 27 metres in a southeasterly direction. The work for reshaping the island began after the end of the competitive season at

the beginning of October 2009. Excavators first of all removed around 7,000 m³ of earth from the western part. Together with additional new material, part of this excavated earth was then piled on the southeastern part of the island, so that the approximately 5,600-m² island is now even a few square metres larger.

But before the excavators could begin on site, the existing flora and fauna on the island were painstakingly recorded. Mussels were moved and plants worth protecting, such as the rare "everlasting flower" and "yellow flag iris", were given a new location. "We gave maximum priority to maintaining the strict nature conservation requirements that were laid down on gaining planning permission to move the island. The newly

created part was therefore quite deliberately given the form of a small bay in order to provide the rare spined loach fish with an ideal breeding ground," says Project Manager Christiane Hoffmann from the local building authorities. A total of 44 new trees will be planted to compensate for several wild trees and bushes that had to be felled in the spring of 2009. In addition, cuttings were gained from the felled black poplars, which will also be planted again on the island.

The city and state of Brandenburg jointly invested around half a million euros in shifting the island. The new shore area is still undergoing the so-called settling phase. Only when this is completed will it be possible for leisure boaters to set course to "Acapulco".



Heavy technology in operation. "Tepees" protect the plants.



Spindle (*Euonymus europaea*) with its red seed capsules also grows on the island and was protected.



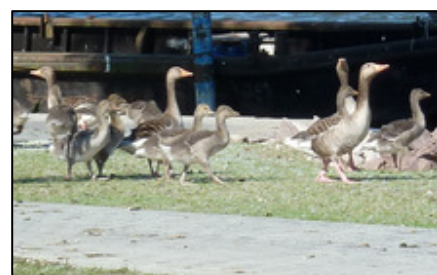
The "shifted" island: The 27 m gained for the additional lanes by the excavation can be clearly seen to the left of the image.

Incidentally ...

... there is also a new lakeside path along the Brandenburg regatta course.

It links the jetties at the boat park and rigging areas and its main use is to facilitate access to the boats for disabled athletes.

However, the first "users" of the new path were the many wild geese that have been a feature of the regatta course for many years, and who evidently feel perfectly at home on the extensive course with its natural surroundings.



New video wall completed

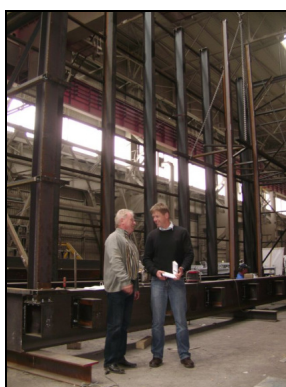
Together with regatta chief Uwe Philipp, planners, architects and representatives from the Mette hydraulic construction company were able to gain a first impression of the enormous dimensions of the new video wall on visiting the production facilities of the Brandenburg company Metallbau W. Gartensleben & Sohn. The steel structure for the new display screen is 8 x 12 metres in size

and weighs approximately 17 tonnes. It forms the framework for the video wall cladding, which has been enlarged from 32 m² to 64 m².

Because the regatta course was expanded by 8 lanes, the location for the new display screen had to be shifted 27 metres towards the middle of the lake. In order that the roughly 10,000 spectators on the temporary grandstands can

also follow important phases of the competition from an optimum view point, the wall will also be shifted a few metres towards the starting line.

The assembly of the steel structure, video wall modules and casing has now begun, which means that the new display screen will soon be able to be tested and used.



Metal and hydraulic engineers in discussion in front of the steel structure.



The enlarged video wall with heavyweight technology is being constructed at a new location in the middle of Beetzsee Lake.



Technicians fixing the new video display screen's high-tech and powerful modules to the 8 x 12 m steel frame.

An excellent investment in the future: A further 5 million euros for the regatta course

After the end of an unusually prolonged and cold winter period, the further expansion of the Beetzsee regatta course was begun in spring 2010 with the implementation of an extensive bundle of measures. The 13 part-projects are being financed with funding from the German government's Economic Stimulus Package II.

A total of more than 5 million euros is being provided, which must be spent on construction work by the end of the year. "In order to implement the raft

of tasks in the short period of time and during ongoing training and competitions, we have commissioned several architectural offices to draw up plans, coordinated the construction phases with the regatta event schedules and organised the tendering and award procedures so that many companies from the region can be involved," says building project manager Martin Pieper and adds: "To date we are well on schedule with all the currently ongoing part-projects, such as

shifting the display screen, extending the finish tower and reorganising and redesigning the operational areas."

The preparation is also already completed for the other construction measures, such as expanding the boat park or preparing the groundwork for the temporary stands, which means that their realisation can begin.

(Continued on page 4)

(Continued from page 3)

Besides the aforementioned part-projects, it is also intended to install state-of-the-art broadcasting and media technology, whereby the press and media area shall also be redesigned. In addition, the traffic areas will also be reconfigured to meet the growing demands, the accreditation

area will be redesigned, a new athletics centre will be constructed and the regatta technology will also be upgraded. As part of the overall package, a particular focus will be on creating barrier-free access within the site and adapting existing buildings to make them suitable for the disabled.

For example, the outside flight of steps to the upper floor of the central club house has been rebuilt, a special sanitary area has been installed in the boat park building and a new lakeside path created that will enable adaptive athletes to gain better access to the jetties.

More room for finishing line judges: Construction work on sister tower well under way

The impressive finish tower has been surrounded with scaffolding for some weeks and the imposing steel and concrete structure immediately next to it already gives an idea of what the new sister tower will look like. The refurbishment of the "old" tower and the construction of the new extension form part of the ambitious programme of measures to expand the Beetzsee regatta course.

However, before the builders could begin constructing the foundations for the new tower, they had to carry out extensive work to lower the groundwater level. The intermediate floors have now been poured and the installation of the metal frames for the glazing has begun. When everything is completed, there will be more than 100 m² of additional space for the finishing line judges, timekeepers, commentators, technicians and

organisers. The two parts of the building will be connected on the individual floors. In addition, all rooms will be equipped with state-of-the-art air-conditioning in order to provide a pleasant environment in which to work in, particularly during the summer months. A modern roof structure will also span across the VIP stand.



This is how the new double finish tower will look like: a successful combination of the historical structure with modern architecture.



Before the foundations were poured, the groundwater level had to be lowered in an elaborate operation in Spring this year.



June 2010: The construction of the new tower is progressing.

Imprint / Contact:

Organisationsteam Candidate City 2015
c/o Landesruderverband Brandenburg e.V.
An der Pirschheide 28
14471 Potsdam
Germany

Phone: +49 (0)33 1 / 97 23 62
Fax: +49 (0)33 1 / 90 25 60
Email: lrverband@t-online.de

Chair/Deputy Chair: Hartmut Duif, Jörg Landvoigt;
Org./Finances: Jürgen Dabrat, Peter Gratz, Gaby Zetzsche; **Marketing/Media:** Beate Dabbagh, Henriette Rösler, Kathrin Boron, Norbert Plaul;
Regatta course: Uwe Philipp; **Construction:** Martin Pieper, Dieter Galla; **Environment:** Bernd Gabrysiak; **State/City:** Karl-Hans Pezold, Viola Cohnen; **Protocol /Services:** Dr. Günter Brunner, Dr. Heidrun Brunner